

**Lower mainstem Kennebec:**

This week’s report is again going to be a short one. Current flow conditions (4,780 cfs) are currently about average – close to the median (4,590 cfs) for this time of the year (based on 37 years of data [USGS current conditions](#)).

The Lockwood fishlift has been fully operation for the past week. No new Atlantic salmon but 3 recaptures were captured since the last report and 154 total captured at Lockwood for the 2023 season so far.

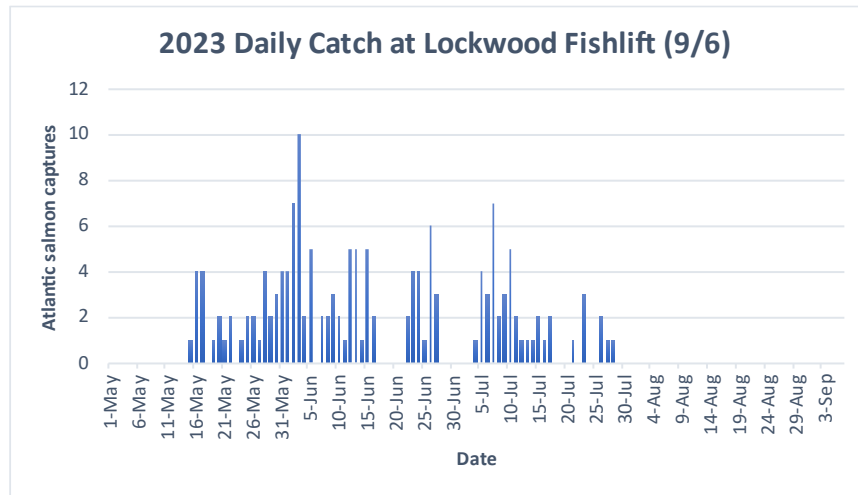


Figure 1: Daily Atlantic salmon catch at Lockwood fish lift, Waterville, ME. Daily catches for 8/29-9/6 each day were 0 new salmon/day and is averaging 0 salmon/day. The trap opened 5/8, was closed 6/18-6/21, 6/30-7/1 and 7/3 due to high flow conditions and 8/31-8/28 due to repairs and maintenance.

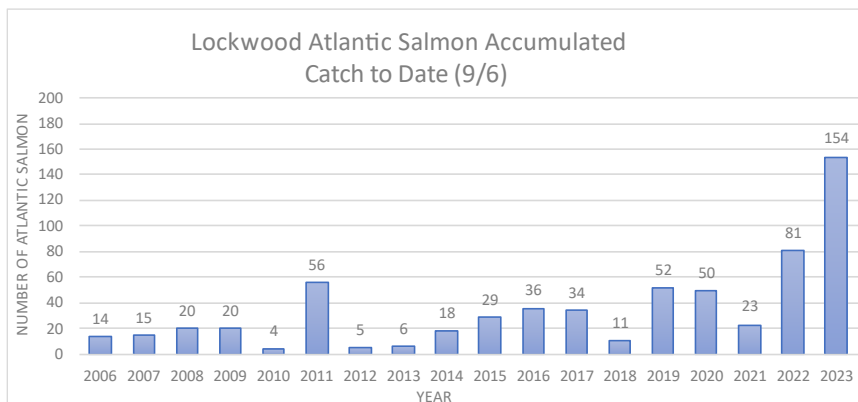


Figure 2: Atlantic salmon catch to date for each year since Lockwood fish lift (Waterville, ME) has been operational (2006).

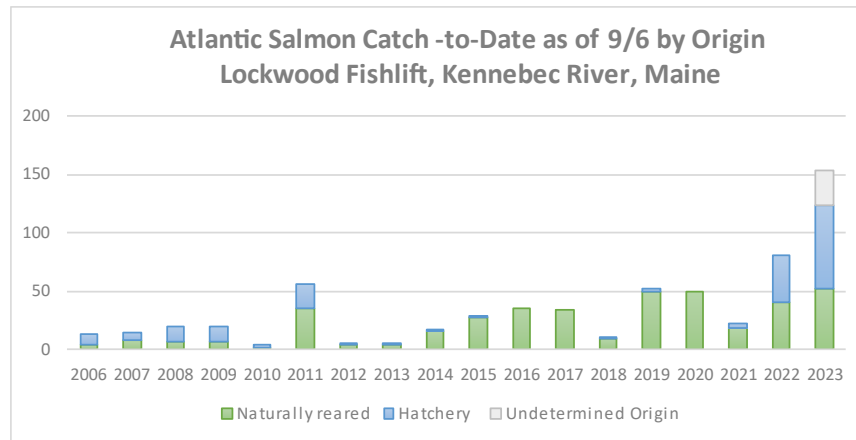


Figure 3: Atlantic salmon catch-to-date for each year by origin since Lockwood fish lift (Waterville, ME) has been operational (2006).

**Lockwood fish lift (mainstem Kennebec) total catches for 2023:**

- River herring: 136,717\*
  - American shad: 4\*
  - Sea Lamprey: 7\*
  - Striped Bass: 91\*
  - Atlantic Salmon: 154 new, 28 recaptures
- \*Reported by Brookfield 9/4

**Benton Falls (Sebasticook River) total catches for 2023 as of 6/21:**

- River herring: 4,154,124
- American shad: 2
- Atlantic salmon: 3
- Sea Lamprey: 20
- Striped Bass: 0
- American eel: 21

**Androscoggin River:**

Currently the river discharge level is at 6,170 cfs, which is between the 75<sup>th</sup>% and highest recorded discharge level (based on 94 years of data) ([USGS Water Data](#)).

No Atlantic salmon have passed since the last report.

**Brunswick fish lift (mainstem Androscoggin) total catches for 2023:**

- River herring: 67,927\*
- American shad: 13\*
- Sea Lamprey: 491\*
- Atlantic Salmon: 8\*
- Striped Bass: 0\*

\*Reported by Brookfield 9/4 *All data is preliminary until final auditing is complete.*